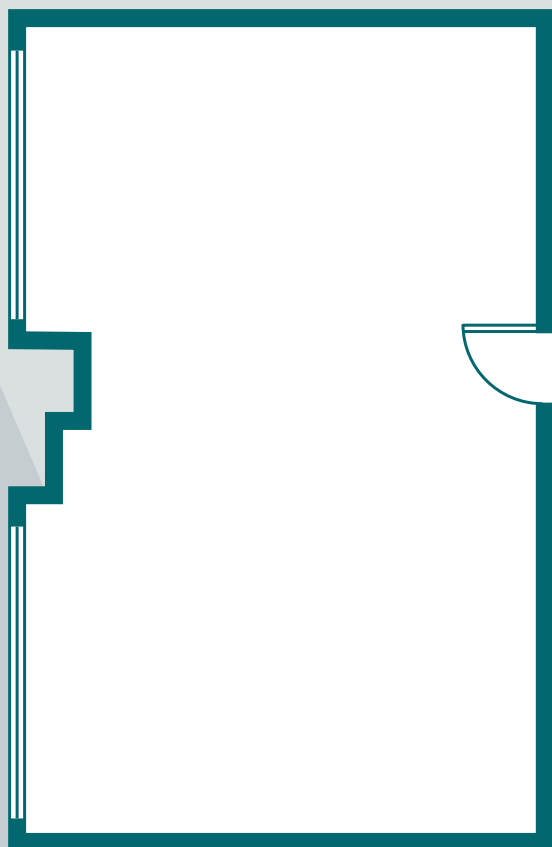


BURRELTON



DESCRIPTION Rectangular room with north facing windows

SPECIALS Telephone and ISDN line

LIGHTS 3 Strip lights

DAYLIGHT 2 Large, north facing windows (1.626m x 1.275m)

ROOM DIMENSIONS

L - 6.407m

W - 4.117m

H - 2.729m

Area 26.4sqm

HEATING 2 Radiators, central heating

SET-UPS Max

Theatre 20

Boardroom 12

Horseshoe 12

Cabaret 12

DINING CAPACITY

Seated rounds 6

Standing buffet 20